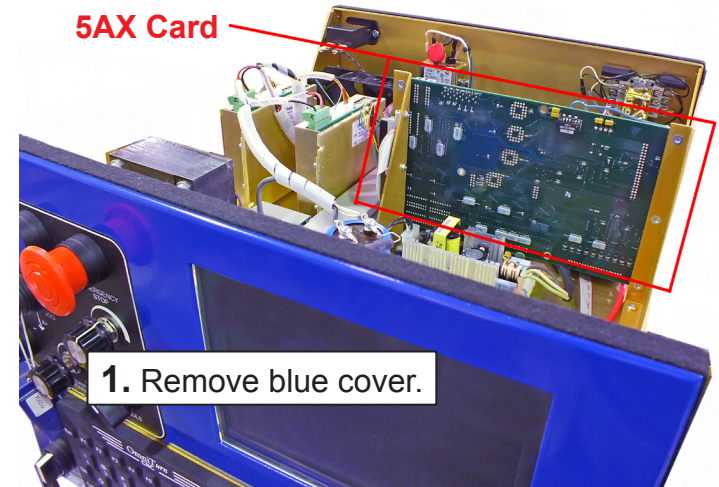


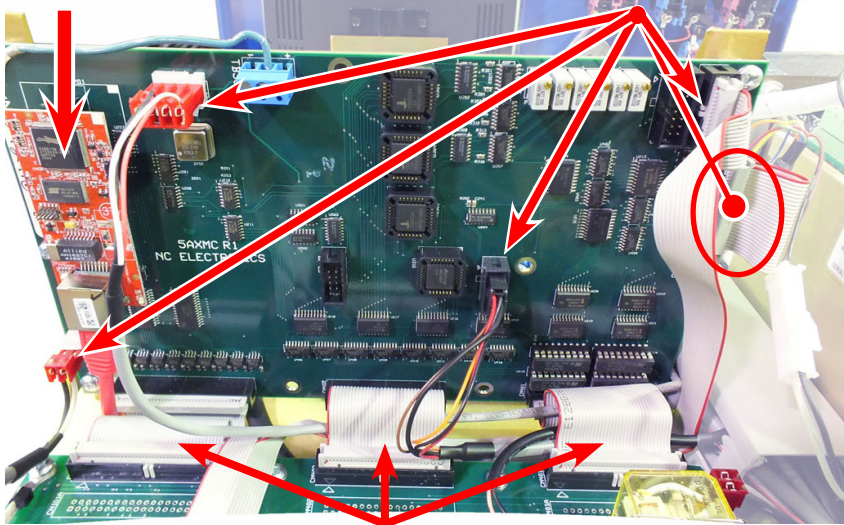
*This document describes replacing old-style 5AX card with latest version*

1. Remove blue cover.
2. Unplug all cables on 5AX card, and unplug three wide ribbon cables from connectcard.
- 3a. Gently and carefully remove "Rabbit" module so ethernet cable can be unplugged.
- 3b. Carefully unplug "Rabbit" module from ethernet cable.
4. Unplug cable at grey header on in-board mounting bracket (picture #4 on next page).
5. Remove six screws holding mounting brackets to 5AX card. *Start with lowest two; if you cannot remove these two, then remove the 5AX card mounting brackets from chassis (picture #5 on next page). Replace the mounting brackets before installing the new 5AX card.*



**3a.** Gently & carefully remove "Rabbit" module so ethernet cable can be unplugged

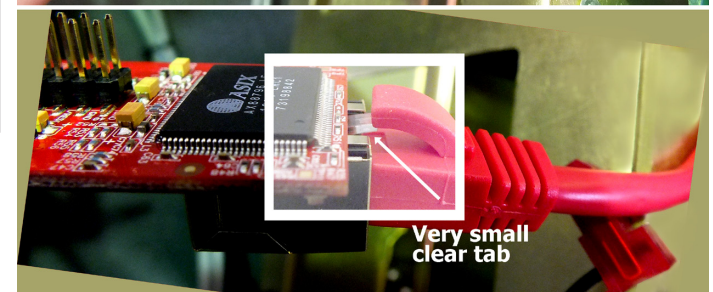
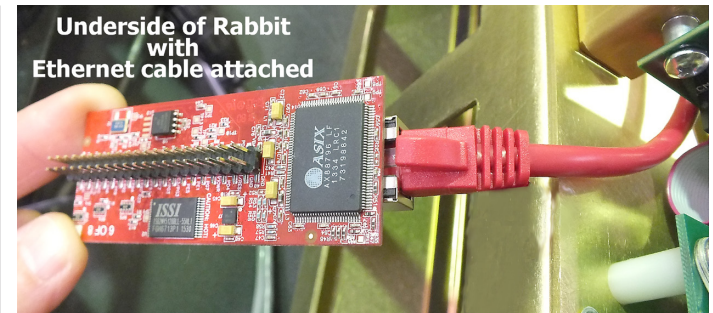
**2.** Unplug all cables except three at bottom of 5AX card.



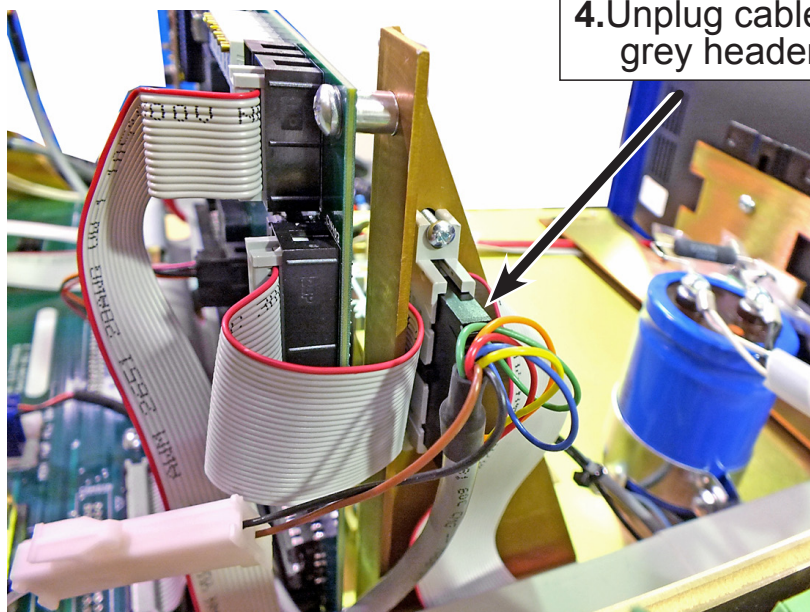
**2a.** Unplug these three cables at Connect Card

**3b.** New 5AX card has new ethernet module, so disconnect module from ethernet cable.

**NOTE:** Ethernet module on new 5AX may need to be removed to properly connect ethernet cable.

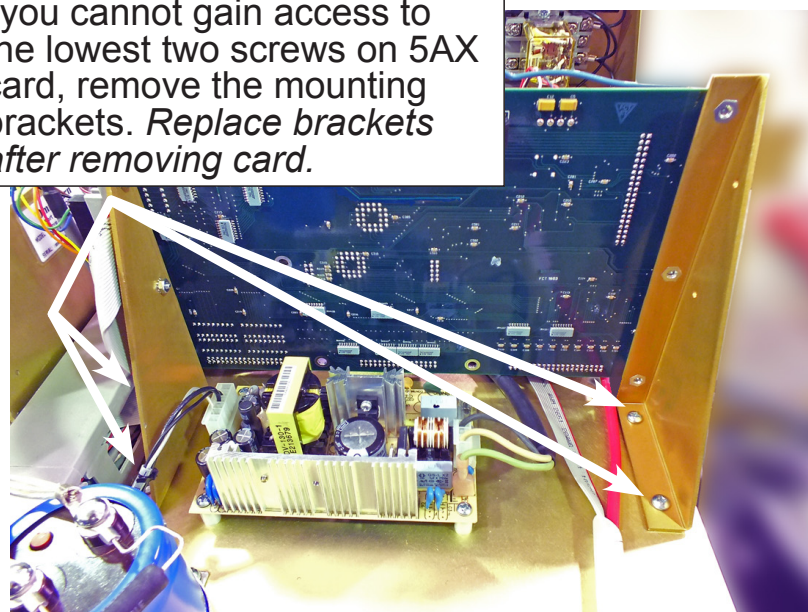


*Remove Old-style 5AX Card, concluded*  
(See next page for installation of new 5AX Card)



4. Unplug cable at grey header

5. If you cannot gain access to the lowest two screws on 5AX card, remove the mounting brackets. Replace brackets after removing card.

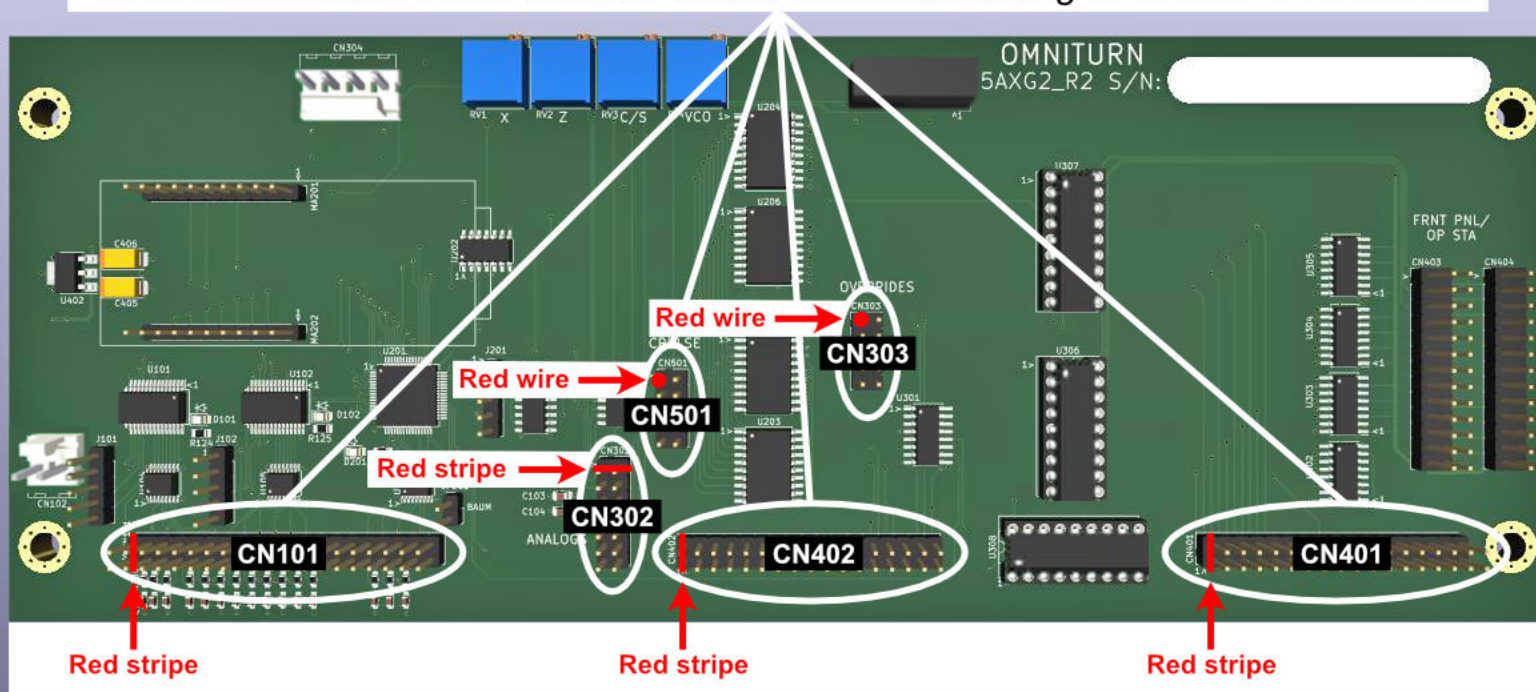




### *Install New 5AX Motion Card (before attaching to mounting brackets)*

1. *If you removed the mounting brackets from the chassis, replace them first.*
2. *Attach wide ribbon cables to the three connectors at the bottom of the card. Because these connectors have no 'fence', be careful to insure that both rows of pins engage the ribbon cable connector. Red stripe on these three must be on the left, as shown below. Refer to page five for picture of all cables connected to the card.*
3. *Attach ribbon cable that connects to C302 (ANALOGS), with red stripe at top.*
4. *Attach discrete wire cables from CN501 (CPULSE) and CN303 (OVERRIDES) with the red wire at upper left.*
5. *Attach card to mounting brackets.*

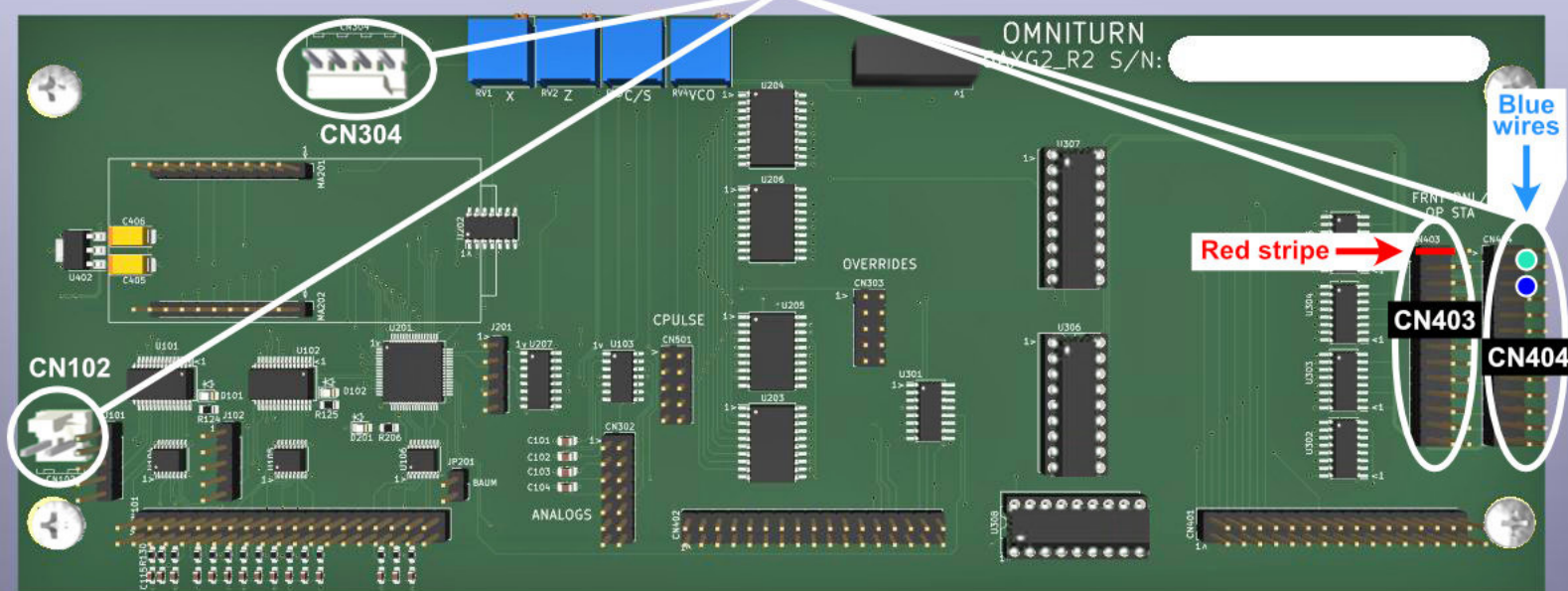
Connect cables to these six connectors *before mounting 5AX card on brackets*



## Install New 5AX Motion Card (after attaching to mounting brackets)

1. Connect the discrete Operator's Station (Palm Box) cable to CN404, with blue wires at the top right. *Refer to next page for picture of all cables connected to the card.*
2. Attach ribbon cable from Front Panel Connect Card to CN403 with red stripe at top.
3. Attach four-position red connector to CN304.
4. Attach three-position red connector to CN102.
5. Plug the ethernet cable into the ethernet module, and plug the module into the card. *Refer to next page for picture of all cables connected to the card.*

Connect cables to these four connectors *after* mounting 5AX card on brackets





*New 5AX Motion Card on mounting brackets, with all cables connected*

